

# Powering Telecom and Utilities Transformation with Oracle Cloud SCM, WMS, and OTM





# Powering Telecom and Utilities Transformation with Oracle Cloud SCM, WMS, and OTM

**How Oracle's Cloud Applications Enable Resilient, Efficient, and Agile Operations in Regulated Industries**



## INTRODUCTION

The telecom and utilities industries sit at the center of global infrastructure — essential services that depend on precision, uptime, and efficient field execution. Whether managing physical networks, high churn technical field assets, or mission-critical equipment, these organizations are navigating aging infrastructure, regulatory complexity, rising customer expectations, and ongoing digital modernization efforts.

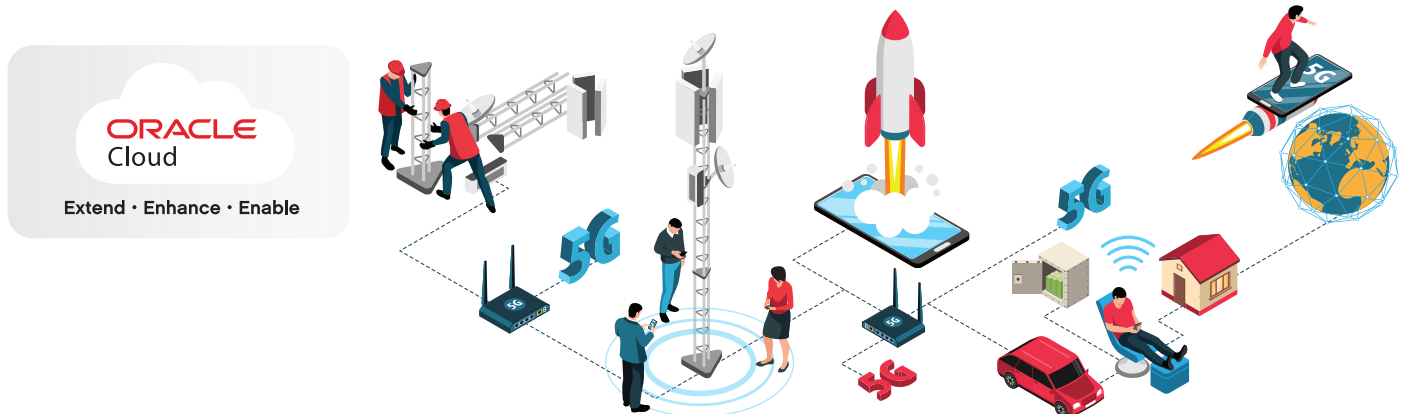
Oracle Fusion Cloud Supply Chain & Manufacturing (SCM), including Oracle Warehouse Management (WMS) and Transportation Management (OTM), equips telecom and utility companies with the modern, cloud-based systems needed to meet these challenges head-on. From managing work orders and spare parts to automating logistics and warehouse operations, Oracle provides the operational backbone for service continuity, field enablement, and cost control.

## Why Telecom and Utilities Are Embracing Oracle Cloud SCM

### INDUSTRY DISRUPTION REQUIRES A CLOUD-FIRST APPROACH

Legacy systems can no longer support today's complexity. Utilities face decentralized asset networks and environmental pressures, while telecom providers manage exploding demand for bandwidth, 5G (or 5G Advanced) infrastructure, and next-day delivery of customer-premise equipment.

Oracle Cloud provides a unified, secure, and continuously evolving platform — one that brings supply chain, operations, and field service teams onto a common system of record.



For detailed information, visit: [www.intellinum.com](http://www.intellinum.com)

### Oracle WMS: Enabling Warehouse Agility for Network-Critical Parts



Telecom and utility companies manage thousands of critical components — from transformers and routers to poles, meters, and fiber cable. These must be tracked, staged, and issued with precision.

- Oracle Warehouse Management delivers:
- Real-time visibility into parts, tools, and equipment
- Serialized inventory control for regulated or traceable items
- Configurable mobile workflows for technicians, receiving teams, and distribution centers
- Support for returns, refurbishments, and reverse logistics
- Role-based access for third-party logistics providers or field contractors

A major electric utility uses Oracle WMS to coordinate kitting of transformer parts, staging for emergency response trucks, and cycle counting across multiple regional storerooms.



### Oracle OTM: Coordinating Logistics for Distributed Field Networks



For both telecom and utility providers, the movement of assets — from large-scale equipment to last-mile components — is a constant operational challenge. Delays or damage can trigger service penalties, lost revenue, or regulatory fines.

Oracle Transportation Management enables:

- Multi-leg, multimodal shipment planning
- Route optimization and dynamic carrier selection
- IoT-based tracking for high-value or time-sensitive loads
- Visibility for dispatchers, contractors, and field personnel
- Cost control with built-in freight audit and invoice reconciliation

A telecom company uses Oracle OTM to coordinate shipments of 5G hardware to urban cell sites and rural hubs, ensuring compliance with tight deployment schedules.





## End-to-End Visibility Across the Asset Lifecycle

Beyond warehouses and trucks, Oracle Cloud SCM connects the full lifecycle of utility and telecom assets — from initial sourcing through to installation, repair, and eventual retirement.

APPLICATION	INDUSTRY BENEFIT
<b>Product Lifecycle Management (PLM)</b>	Track network equipment across generations and vendors
<b>Maintenance Management</b>	Schedule inspections, automate preventive service, and reduce outages
<b>Inventory Management</b>	Optimize regional stock levels, reduce aging inventory, and improve availability
<b>Project Management</b>	Manage serialized inventory, inspections, and returns
<b>Service Logistics</b>	Enable field replenishment, depot repair, and returns at scale

## Designed for Regulated and Mission-Critical Environments



Oracle is trusted by leading telecom and utility providers around the world because of its ability to scale, integrate, and comply.

Oracle's industry advantage includes:

- Unified platform: Integrates ERP, HCM, SCM, and Field Service Cloud
- Scalability: Supports large, distributed operations with global reliability
- Security and compliance: Built-in controls for regulatory, safety, and audit standards
- Continuous innovation: Quarterly updates and cloud-native extensibility
- AI-driven insights: Predict disruptions, optimize logistics, and monitor field trends



**CONCLUSION**

For telecom and utility providers, operational efficiency isn't optional — it's essential. Oracle Cloud SCM, WMS, and OTM provide the foundation for intelligent, connected, and resilient operations. By modernizing inventory control, streamlining logistics, and connecting frontline execution with back-end planning, these systems deliver measurable impact across performance, cost, and service reliability.

**The future of infrastructure runs on cloud. Oracle helps make it real.**